

MUSEUM MAP

WELCOME

LOUVRE

WELCOME TO THE LOUVRE

The origin of the Louvre dates back to the 1200s. Once a royal residence, it became a museum in 1793 during the French Revolution and is now home to artworks dating from the 7th millennium BC to the 1850s. **The collections are displayed on five levels, in three interconnecting wings named after three prominent figures from French history: Sully (1559–1641), chief minister of King Henri IV, Richelieu (1585–1642), chief minister of King Louis XIII, and Denon (1747–1825), first director of the Musée du Louvre.**

PRACTICAL INFORMATION



Louvre Audio Guide
Rental an Audio Guide (on New Nintendo 3DS™ XL) at the museum's ticket area; collect your guide on Level -1



Activities, tours and workshops
Group reception area under the Pyramid, Level -2
Studio, Level -1



Walking sticks, folding stools, pushchairs, baby carriers and wheelchairs are available free of charge for visitors who need them. Visitor assistance area, Level -2



The main Book and Gift Shop in the Allée du Grand Louvre is open every day except on Tuesdays, from 10 a.m. to 6:30 p.m., and until 9 p.m. on Wednesdays and Fridays.



Cafés and restaurants
A 'Paul' bakery; 'Café Richelieu-Angelina' (with terrace); 'Bistrot Benoit', a traditional French restaurant; 'Goguette' cafeteria; Starbucks; 'Café Mollin' (with terrace); and takeaway counters.



www.louvre.fr



Follow us on social media to keep up to date with life at the Louvre.



Museum
Every day except on Tuesdays, from 9 a.m. to 6 p.m., and until 9 p.m. on Wednesdays and Fridays.
Rooms begin closing at 5:30 p.m., or at 8:30 p.m. on Wednesdays and Fridays.

To improve the visitor experience, renovations are currently underway in the museum. However, access is guaranteed to 90% of the permanent collections on weekdays and 100% at weekends.
Information: +33 (0)1 40 20 53 17

Dominique-Vivant Denon Research Centre (Porte des Arts)
A research and resource centre, open to individuals on Wednesdays, Thursdays and Fridays, 1 p.m.–5 p.m.

Viewing room for prints and drawings (Porte des Lions)
Open Monday to Friday from 1 p.m. to 6 p.m. by prior request. Contact: cabinet-des-dessins@louvre.fr

Visitor experience survey: **GIVE US YOUR FEEDBACK**



LOUVRE

RICHELIEU WING



LEVEL -1 The Studio
The Studio is a space to relax, exchange and enjoy a wide variety of events and other programming. Freely accessible with a museum admission ticket, it offers families and other visitors a new way to discover the museum and its collections.



LEVEL 0 Near Eastern Antiquities / Mesopotamia / Iran (5000 BC–AD 700)



LEVEL 1 Decorative Arts / Europe (500–1850)



LEVEL 2 Paintings / Northern Europe (1350–1850)



LEVEL 2 Paintings / France (1350–1650)



LEVELS -1 AND 0 Sculptures / France (500–1850)

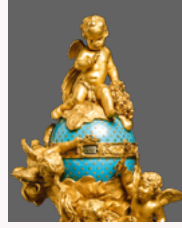
SULLY WING



LEVELS 0 AND 1 Egyptian Antiquities (4000–30 BC)



LEVEL -1 History of the Louvre The Medieval Louvre



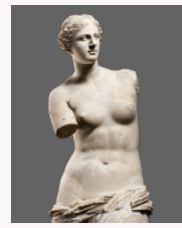
LEVEL 1 Decorative Arts / Europe (1650–1800)



LEVEL 0 Near Eastern Antiquities / Iran / The Levant / Arabia (7500 BC–AD 700)



LEVEL 1 Greek, Etruscan and Italic Antiquities (1000 BC–AD 500)

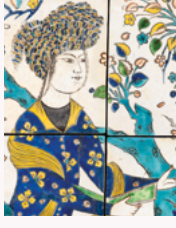
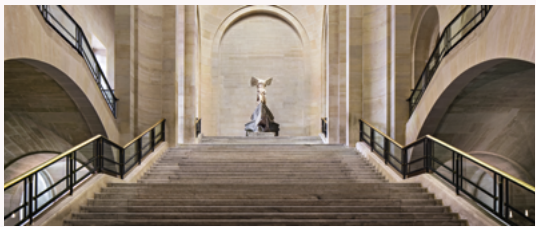


LEVEL 0 Greek Antiquities (500–30 BC)



LEVEL 2 Paintings / France (1650–1850)

DENON WING



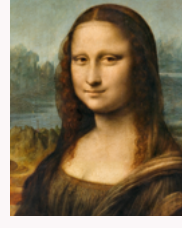
LEVELS -1 AND -2 Islamic Art (700–1800)



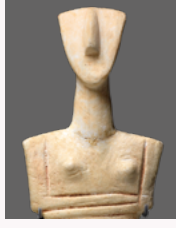
LEVELS 0 Sculptures / Europe (500–1850)



LEVEL 0 Arts of Africa, Asia, Oceania and the Americas (700 BC–AD 1900)



LEVEL 1 Paintings / Italy (1250–1800)



LEVEL -1 Greek Antiquities (6500–500 BC)



LEVEL 0 Roman Antiquities (100 BC–AD 500)



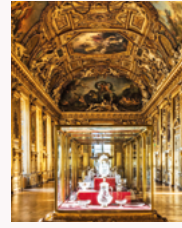
LEVEL 1 Paintings / France (1780–1850)



LEVEL 1 Paintings / Spain (1400–1850)



LEVEL -1 Sculptures / Europe (1200–1600)



LEVEL 1 The Galerie d'Apollon / The French Crown Jewels



LEVEL 1 Paintings / Great Britain / United States (1550–1850)

ALSO AT THE LOUVRE...

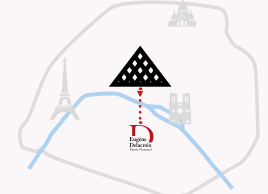


The Carrousel and Tuileries Gardens
The Carrousel Garden is laid out around the triumphal arch of Napoleon I, completed in 1808. To the west is the Tuileries Garden, created in 1564 by Queen Catherine de' Medici, redesigned a century later by André Le Nôtre and rearranged several times since. This masterpiece of garden design features beautiful flower beds, pools and groves laid out on either side of the Grande Allée with its view towards the Champs-Élysées. The two gardens are open-air sculpture museums.



The Musée National Eugène-Delacroix
Across the river Seine, just a 15-minute walk away from the Louvre, visit the apartment, studio and garden where the painter Eugène Delacroix spent the last years of his life. A haven of peace where you can discover the secrets of Delacroix's studio through paintings, prints, drawings and objects that belonged to him.

Free admission on same day or following day of Louvre visit, on presentation of Louvre ticket.
Open daily, except Tuesdays, from 9:30 a.m. to 5:30 p.m. and until 9 p.m. on the first Thursday of each month.
6, rue de Furstemberg, 75006 Paris
www.musee-delacroix.fr/en
#MuseeDelacroix



From the Louvre to the Musée National Eugène-Delacroix
15 minutes
39 95



Photo credits:
Richelieu wing: © 2015 Musée du Louvre / Michel Denancé, © Musée du Louvre, dist. RMN - Grand Palais / Raphaël Chipault, © RMN - Grand Palais (Musée du Louvre) / Stéphanie Marchal, © Musée du Louvre, dist. RMN - Grand Palais / Hervé Lewandowski, © Musée du Louvre, dist. RMN - Grand Palais / Franck Bohbot, © 1987 Musée du Louvre / Pierre Philibert, © 2008 Musée du Louvre / Angèle Dequier, © RMN - Grand Palais (Musée du Louvre) / Tony Querrec.
Sully wing: © 2016 Musée du Louvre / Michel Denancé, © 2015 Musée du Louvre / Thierry Ollivier, © 2015 Musée du Louvre / Christian Décamps, © Musée du Louvre, dist. RMN - Grand Palais / Georges Poncet, © Musée du Louvre, dist. RMN - Grand Palais / Philippe Fuzeau, © Musée du Louvre, dist. RMN - Grand Palais / Angèle Dequier, © RMN - Grand Palais (Musée du Louvre) / Franck Raes, © RMN - Grand Palais (Musée du Louvre) / Stéphanie Marchal.
Denon wing: © 2015 Musée du Louvre / Michel Denancé, © RMN - Grand Palais (Musée du Louvre) / Tony Querrec, © RMN - Grand Palais (Musée du Louvre) / Benoît Touchard / Michel Lirrado / Tony Querrec, © Musée du Louvre, dist. RMN - Grand Palais / Philippe Fuzeau, © RMN - Grand Palais (Musée du Louvre) / Hervé Lewandowski, © Musée du Louvre, dist. RMN - Grand Palais / Raphaël Chipault, © Musée du Louvre, dist. RMN - Grand Palais / Georges Poncet, © Musée du Louvre, dist. RMN - Grand Palais / Olivier Quadah, © Musée du Louvre, dist. RMN - Grand Palais / Daniel Leblé et Carine Deambrosio, © 2007 Musée du Louvre / Angèle Dequier, © RMN - Grand Palais (Musée du Louvre) / Jean-Gilles Berizzi, © musée du Ouai Branly, dist. RMN-Grand Palais.
Graphic design: Dream On / Museum Gallery Interpretation Subdepartment / Graphic and Digital Interpretation Division / Printing: Imprimerie Technigraphic, July 2024.

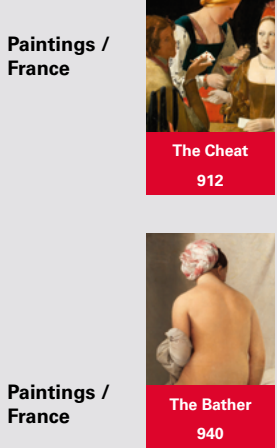
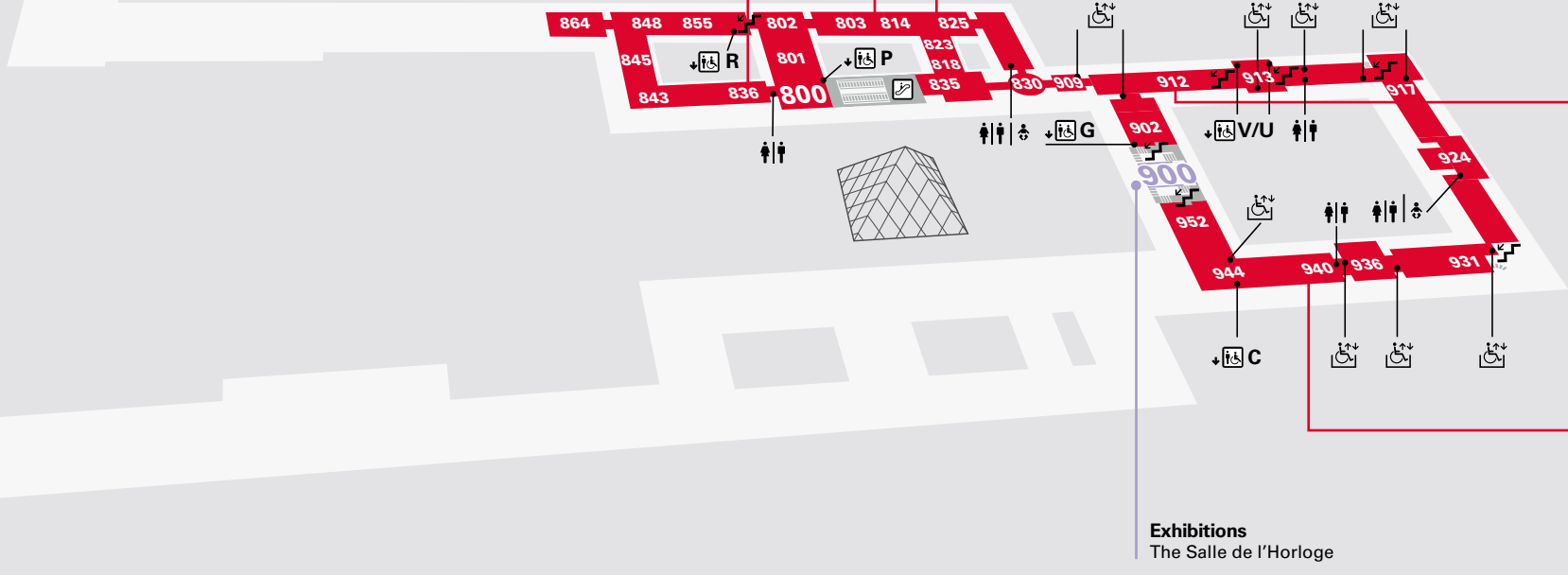
RICHELIEU
Rooms 800 to 864



Paintings / Northern Europe Paintings / France

SULLY
Rooms 900 to 952

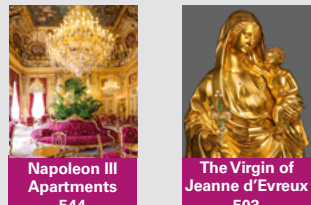
LEVEL
2
MUSEUM
AND
EXHIBITIONS



Paintings / France
Paintings / France

Exhibitions
The Salle de l'Horloge

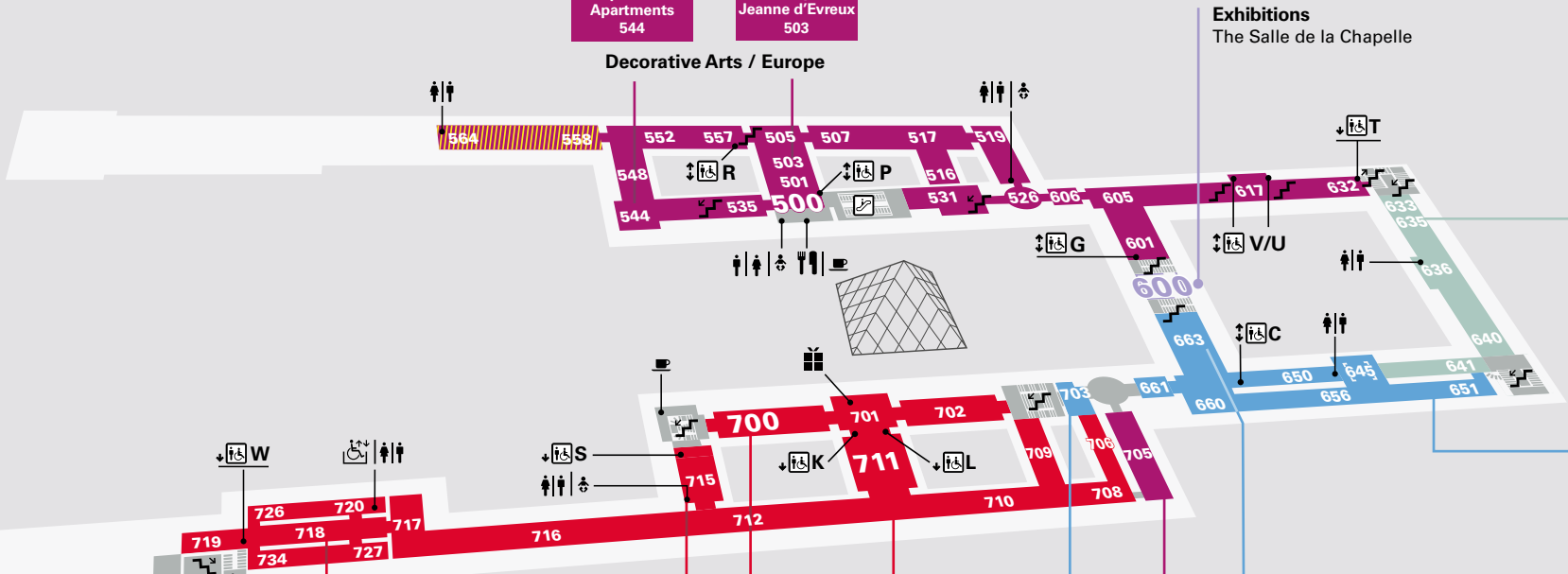
RICHELIEU
Rooms 500 to 564



Decorative Arts / Europe

SULLY
Rooms 600 to 663

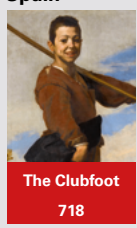
LEVEL
1
MUSEUM
AND
EXHIBITIONS



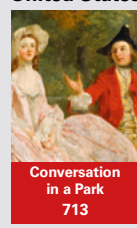
Egyptian Antiquities
Greek and Roman Antiquities

Exhibitions
The Salle de la Chapelle

DENON
Rooms 700 to 734



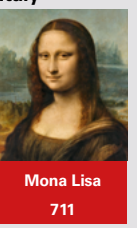
Paintings / Spain



Paintings / Great Britain / United States



Paintings / France



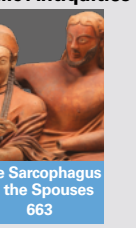
Paintings / Italy



Greek Antiquities



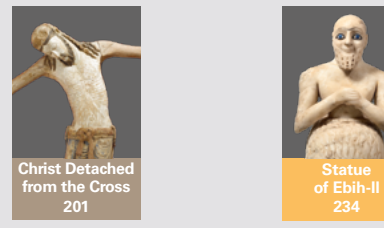
The Galerie d'Apollon



Etruscan and Italic Antiquities

Rooms closed for renovation

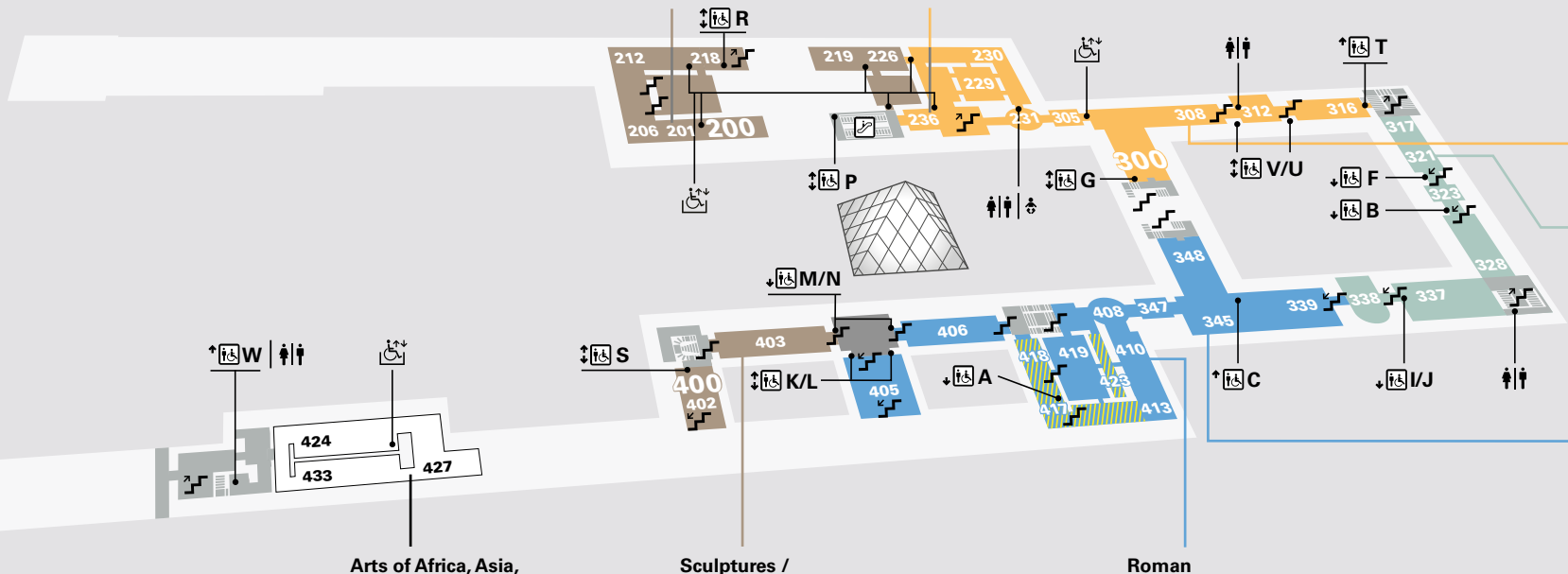
RICHELIEU
Rooms 200 to 236



Sculptures / France Near Eastern Antiquities

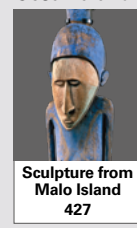
SULLY
Rooms 300 to 348

LEVEL
0
MUSEUM

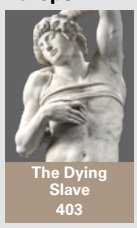


Near Eastern Antiquities
Egyptian Antiquities
Greek Antiquities

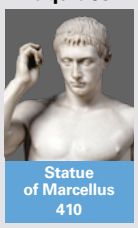
DENON
Rooms 400 to 433



Arts of Africa, Asia, Oceania and the Americas



Sculptures / Europe



Roman Antiquities

Rooms closed for renovation

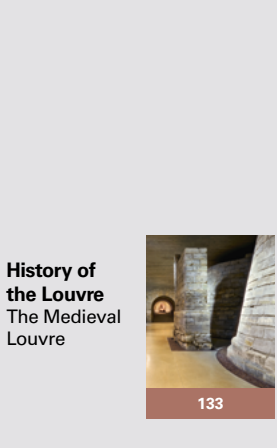
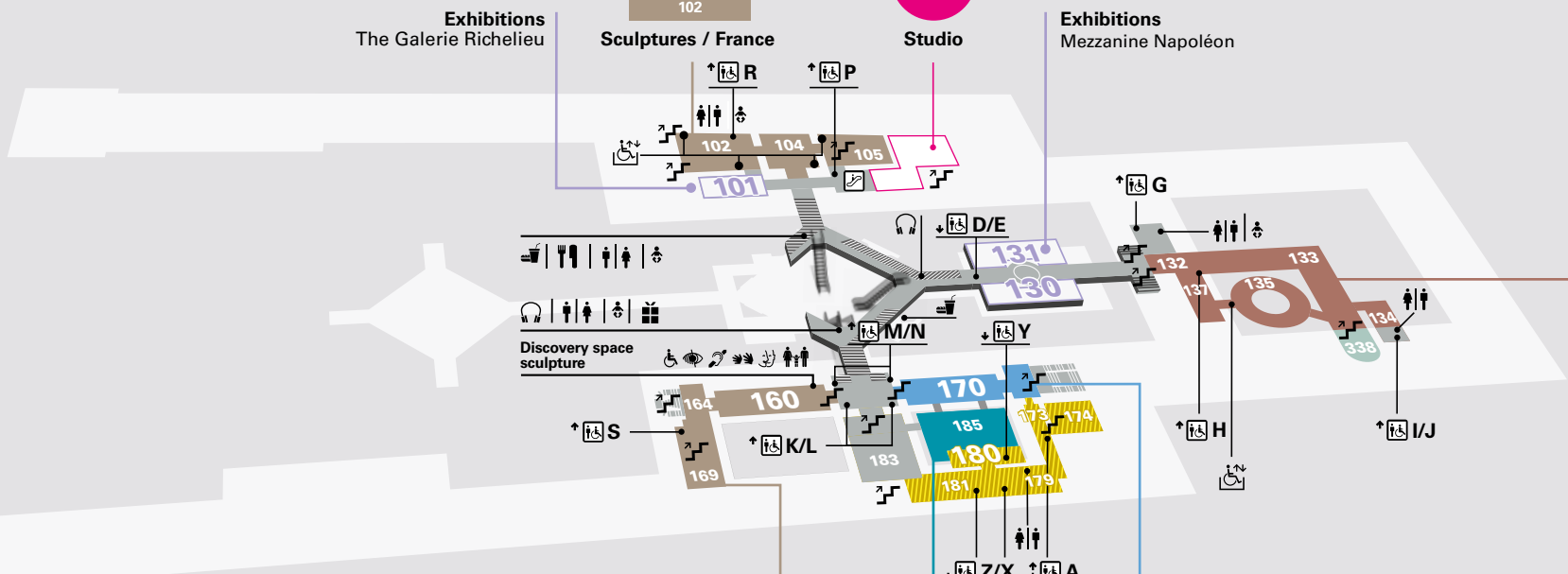
RICHELIEU
Rooms 100 to 106



Sculptures / France

SULLY
Rooms 130 to 137

LEVEL
-1
MUSEUM
AND
EXHIBITIONS



History of the Louvre
The Medieval Louvre

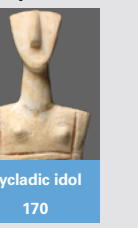
DENON
Rooms 160 to 187



Sculptures / Europe



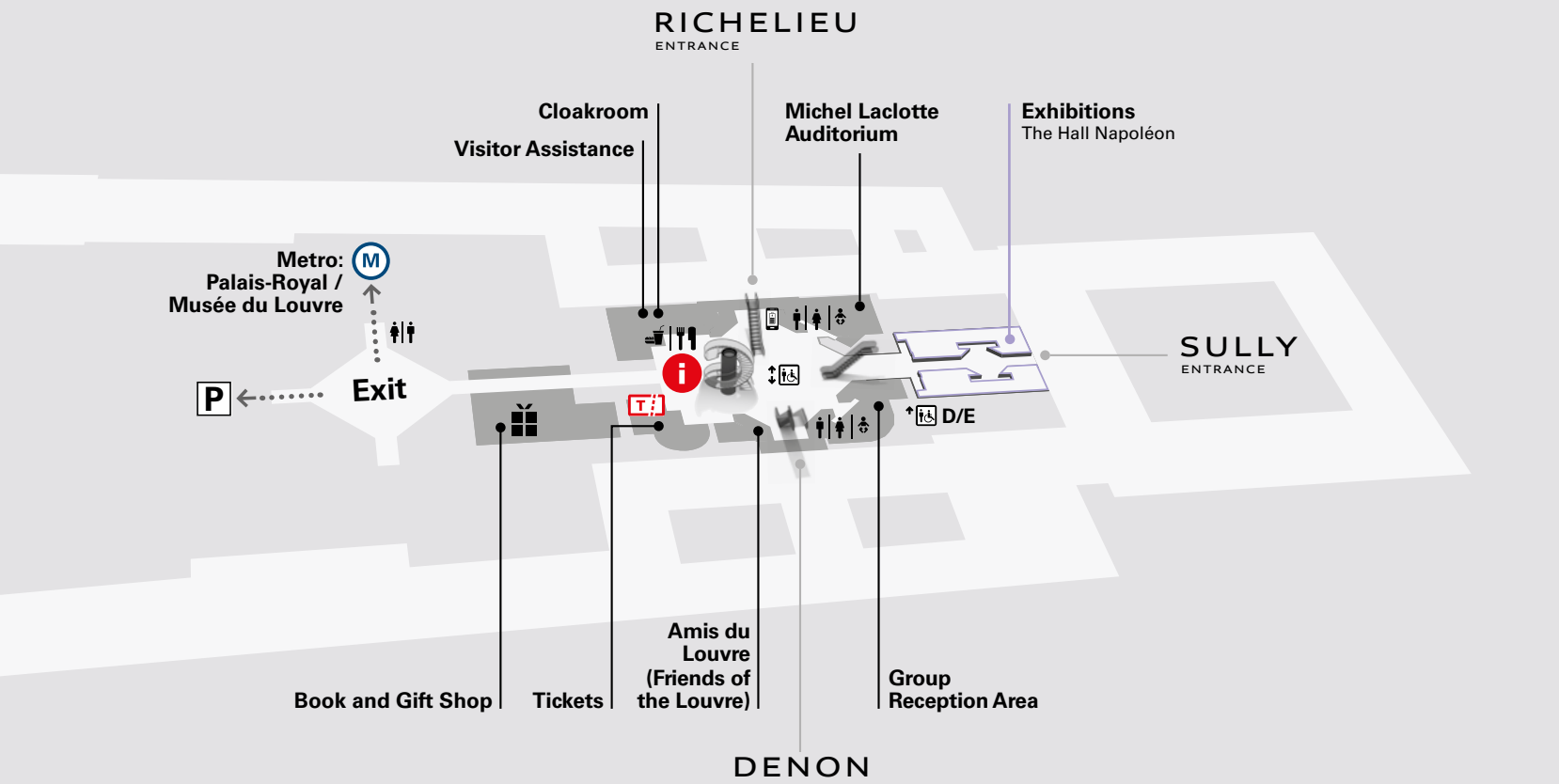
Islamic Art



Greek Antiquities

Rooms closed for renovation

LEVEL
-2
RECEPTION
AREA
AND
EXHIBITIONS



These rules aim to help enhance and protect our heritage and make the museum visit a pleasant experience for everyone.